

CAPABILITY IN STEEL

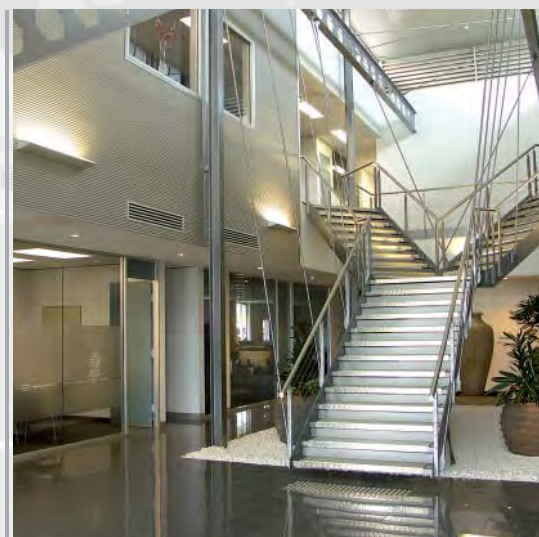
SAMARAS STRUCTURAL ENGINEERS



Samaras Structural Engineers' mission is to be recognised as a market leader in the delivery of complete steel structure fabrication and construction solutions that meet even the most challenging of client expectations.

FACTS AT A GLANCE

- Huge 75,000m² purpose-built premises
- Includes 24,000m² undercover
- Facilities and expertise to control entire projects in-house
- Capacity to produce in excess of 200,000 fabrication man-hours per year





CAPACITY & CONTROL

Introducing Samaras Structural Engineers: Total Capability in Structural Steel



When undertaking a major structural steel project, an organisation will naturally seek a supplier able to satisfy its specific needs. And these needs will inevitably differ in many ways from one organisation to another.

In our experience, however, two qualities in particular are universally sought after – the capacity to process and deliver the job at the required scale and speed, and the in-house expertise to control the quality of execution at every stage.

With this in mind, at Samaras Structural Engineers we've invested a great deal of time and effort into ensuring the level of capacity and control we offer is truly world-standard.

Our huge 75,000m² purpose-built site at Gillman, South Australia is one of the largest in the country, and includes a massive undercover workshop of 24,000m².

This provides us with the capacity to simultaneously handle multiple projects across the entire spectrum of steel fabrication, including:

- Warehousing
- Complex Urban Infrastructure
- Commercial Buildings
- Sports Stadiums
- Entertainment Centres

- Mining Facilities
- Defence Fabrication
- Major Function Centres
- Fast-Track Work / Shutdowns

We also possess the facilities, equipment and expertise to perform and, therefore, control all aspects of major projects in-house. This includes:

- Project Management
- Shop Detailing
- Fabrication
- Abrasive Blasting and Protective Treatment
- Delivery
- Off-Site Assembly
- Erection

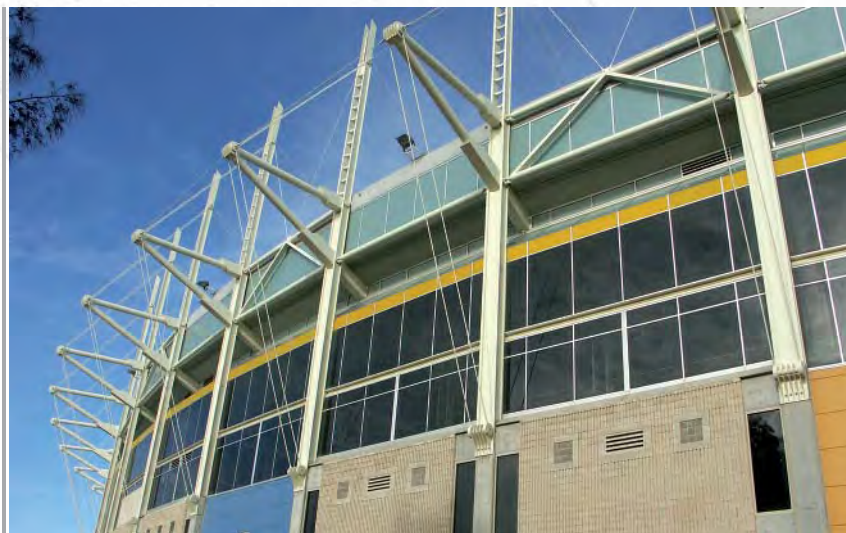
Crane Hire, Machinery Relocation, General Building, Design and Construction services are also available.

**Total capability. Total confidence.
Total peace of mind.**

↑ **ABOVE**
Purpose-built site at
Gillman, South Australia.

← **LEFT**
Head Office Foyer.

- **RIGHT**
Steel Erection and Crane Hire,
Commonwealth Law Courts
South Australia.
- ↓ **BELOW**
Football Park South Australia
(AAMI Stadium).



- ← **LEFT**
Holdfast Shores Pedestrian
Bridge, Glenelg, South
Australia.

PROVEN PERFORMANCE

Vast industry experience

Not only do we have the capacity to deliver, we also have an outstanding record of actually doing so.

Established in 1974, Samaras Structural Engineers has accumulated vast experience in, and knowledge of, a broad range of industries, including:

- Building and Construction
- Manufacturing and Mining

- Government and Civil Infrastructure
- Sports and Entertainment
- Agribusiness
- Retail / Distribution
- Green Star Buildings

UNWAVERING FOCUS

Driven to understand and achieve client objectives

At Samaras Structural Engineers we begin every job with the same goal - to definitively understand our client's objectives so that we can ensure their most effective achievement.

Our Project Management team will drive this knowledge throughout our organisation to best deliver your total requirements.

Rather than blindly follow supplied specifications, our philosophy is to ascertain exactly what functions you wish the structure to perform and what benefits you expect it to deliver.



↑ **ABOVE**
Melbourne Sports and Aquatics
Centre - 2006 Commonwealth
Games Venue.

← **LEFT**
68m Elevator Tower for
ABB Grain Ltd. Erected in
pre-assembled modules.



"I have enjoyed our friendship over this past Project and I look forward to meeting again on another project in the future. At least I know where to come when I need advice, a good price and a pro-active structural steel fabricator."

David Meadows, Project Coordinator
National Construction & Equipment Department
Woolworths Supermarkets

IN-HOUSE INNOVATION

A commitment to the future

Samaras Structural Engineers is passionately committed to the development and support of the Australian steel fabrication industry through continuous improvement and innovation.

What's more, our premises have been built to easily accommodate the productivity gains that these technological advances will inevitably deliver.

Strategies are in place to remain at the forefront of technology, taking on state-of-the-art equipment and processes as they come to market.

SITE LAYOUT

Paint Shop 6,200m² □

Workshop and Loading 14,300m² □

Office total 2,300m² □



↑ **ABOVE**
Material handling of an 89-tonne girder within our Gillman workshop.

← **LEFT**
Aerial view of Gillman site.





← **LEFT**
Dual saw/drill beamline includes in-parallel layout for maximum output.

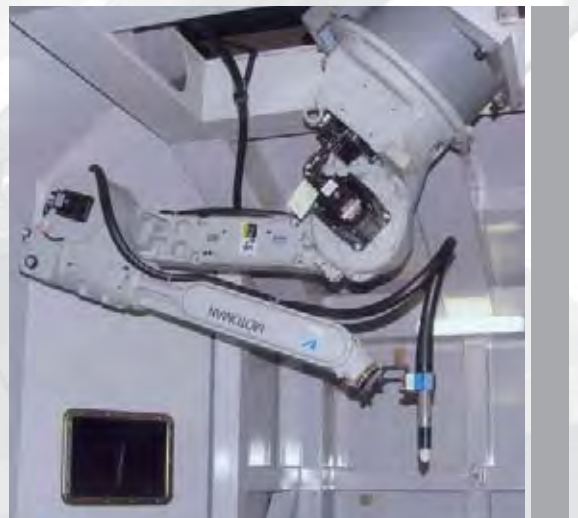
↓ **BELOW**
CNC Automated Plasma Notching Robot.

LEADING TECHNOLOGY

Cutting-edge CNC Processing

Samaras Structural Engineers' CNC Processing Systems are state-of-the-art, providing the capacity to process 300-400 tonnes of steel per week.

Our cutting-edge equipment includes DAITO Beam Lines, complete with a notching/shaping robot.



← **LEFT**
Speed and precision processing of cut and drilled sections.

SINGLE POINT OF CONTACT

Systematic Project Management

Our highly accomplished Project Managers represent the human engine room of all Samaras Structural Engineers projects, driving and controlling them from start to finish.

Each possessing the comprehensive expertise that can only come from years of industry experience, they're able to field all project enquiries, providing clients with the convenience of a single point of contact.

Samaras employs a systematic approach to Project Management. Our philosophy is to ensure every detail, no matter how small, is considered and dealt with in a timely manner.

DIMENSIONALLY GUARANTEED

Advanced Shop Detailing Systems

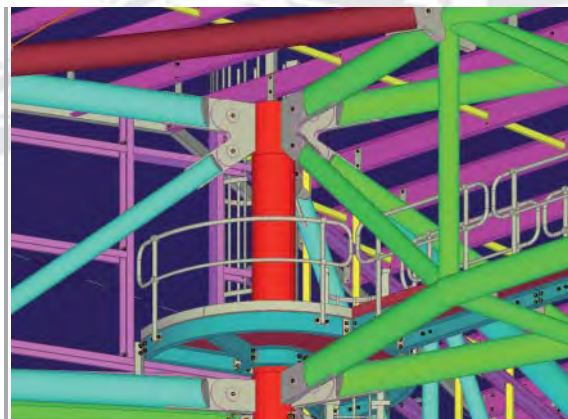
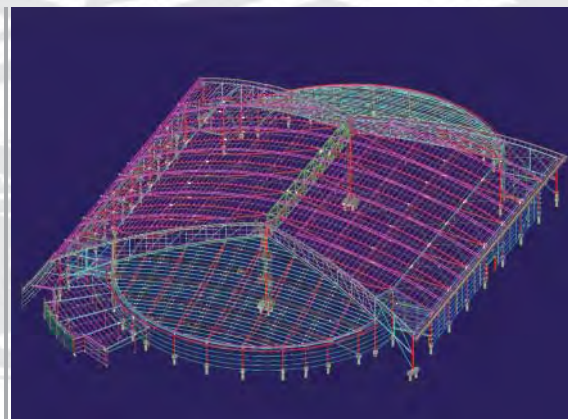
3D modelling and Shop Detailing is conducted in-house for Samaras Structural Engineers projects.

Dimensionally guaranteed, these advanced 3D models provide increased accuracy and facilitate greater production control, including easy clash checking and seamless transfer of CNC Data direct to production machinery. Interfacing with client systems is also possible.

Software packages used include:

- X-Steel
- BOCAD
- Prosteel
- AutoCAD

Project 3D modelling services are also available.



↑ ABOVE
3D computer modelling used to construct the framework for the Victorian State Bowls and Training Velodrome.



↑ **ABOVE**
Specialist spray painter working in the 6,200m² paint shop.

→ **RIGHT**
Abrasive blasting facility 6m (w) x 6m (h) x 25m (l).



UNCOMPROMISING FINISH

In-house Protective Treatment: Abrasive Blasting and Painting

To ensure Samaras Structural Engineers steel fabrications are finished to the highest possible standards, all Abrasive Blasting and Painting is conducted in-house under our full control.

Delivering remarkable efficiency, our state-of-the-art 6,200m² undercover Protective Treatment workshop has ample capacity to handle numerous projects at a time.

Our expertise, capabilities and experience ranges from the simplest primer base-coat right through to highly complex finishes and treatments, such as:

- Multiple-coat architectural finishes
- High-Build Epoxy Systems
- Waterborne Inorganic Zinc Silicates
- Polysiloxane Systems

FULLY EQUIPPED

Ready to undertake Steel Erections of any scale or complexity

The Samaras Structural Engineers erection crew is capable of completing any project, large or small.

Highly experienced in complex erection methodologies, including tension structures and modularised techniques, they're backed by a large in-house fleet of equipment, including:

- Hydraulic Cranes, ranging from 3-250 tonnes
- Qualified and experienced Riggers

- Elevated Work Platforms
- Mobile Welding Units
- A vast array of specialist Rigging Equipment

Pre-Cast Erection and Crane Hire packages are also available.



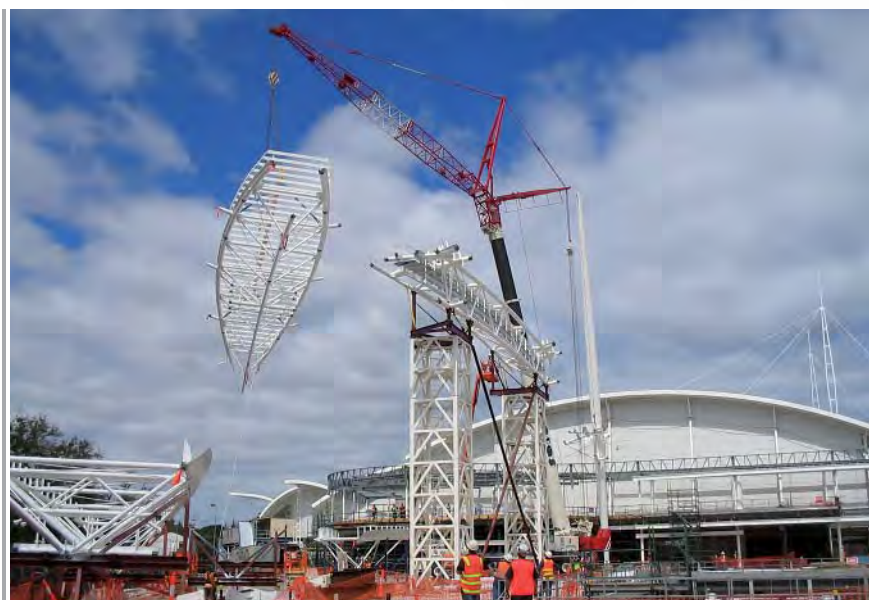
← **LEFT**
Site assembly of the rear glazing structure of the Melbourne Sports & Aquatic Centre.

↓ **BELOW**
Four-crane lift, rotating Port River Bridge girder.



↑ **ABOVE**
Two-crane lift, trial assembly of Port River Rail Bridge.

→ **RIGHT**
250-tonne crane lifting 40m-long x 7m wide truss for the Melbourne Sports and Aquatic Centre.



→ **RIGHT**

Precision fabrication allowed for on-site erection of a 175-tonne Port River Rail Bridge girder using a barge-mounted crawler crane. Positioning was achieved within a 10mm tolerance.

→ **BELOW RIGHT**

Rotating the 85-tonne counterweight section.



HEAVY ENGINEERING

The Port River Bridges

One of South Australia's largest road projects since the Heyssen Tunnels (SE Freeway), the Port River Bridges include a 58m four-lane opening road bridge and a 62m single-track opening rail bridge, approximately 2,000 and 1,200 tonnes respectively.

← **FAR LEFT**

Full trial assembly of Rail Bridge at the Samaras Gillman yard.

← **LEFT**

Delivery of a bridge girder 65m long, 175 tonne.

↓ **BELOW**

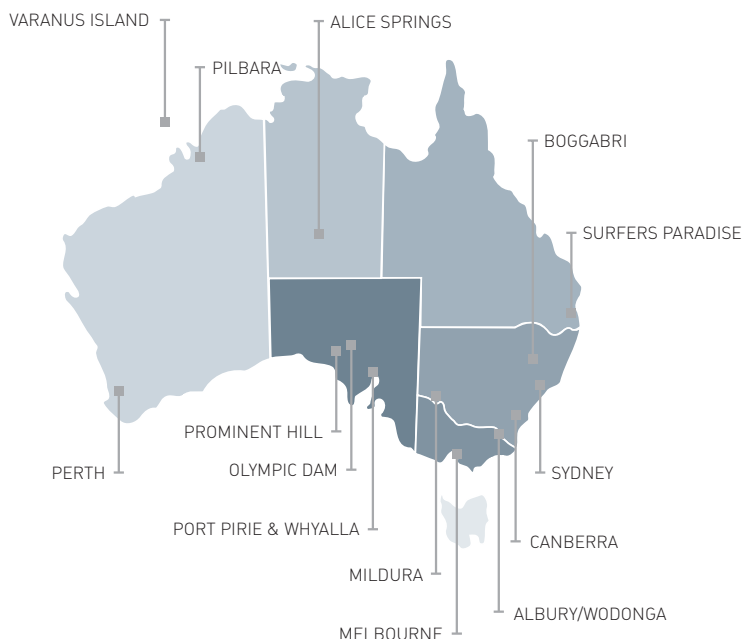
Artist's impression of the completed Port River Bridges.



NATIONAL REACH

Delivering Australia-wide

Conveniently located between all major growth areas of Australian industry, Samaras Structural Engineers has delivered for clients right across the country.



- ↑ **TOP & ABOVE**
State Netball and Hockey Stadium, Victoria.
- ← **LEFT**
Q1 Tower, Surfers Paradise Queensland - Canopy steel work.



"During the audits we had the opportunity to observe and assess the Group's quality procedures in your fabrication shop and on the construction site. We were pleased to conclude that the Samaras Group has displayed a high degree of professionalism and commitment to quality, not readily matched by others we have audited."

David Friedman *Principal, Quality Control in Construction
Project Quality Assurance Consultants,
State Netball & Hockey Centre,
Royal Park (Vic)*



← **FAR LEFT**
Apache Energy, Varanus Island, Western Australia.

← **LEFT**
Esso House, Melbourne.

→ **RIGHT**
986 linear metres of rail bridge supplied to the Pilbara Region of Western Australia - bridge modules leaving Samaras workshop.

↓ **BELOW**
Rail bridge modules from 43 tonne to 159 tonne, installed on-site in the Pilbara.



↓ **BELOW**
National Australia Bank building, Docklands, Melbourne.



- **FAR RIGHT**
AMCOR Batch Tower,
South Australia.
Supply and erect
structural steel,
cladding, silos and
complete mechanical
installation of free-issue
AMCOR equipment.
- **RIGHT**
Commonwealth
Law Courts, Adelaide,
South Australia.



- ← **LEFT**
Construction of Chappell
Stands, Adelaide Oval,
South Australia.
- ↓ **BELOW**
Completed section of the
Chappell Stands.
- ← **BELOW LEFT**
ABB Grain Elevator Tower,
Pelican Point, South Australia.

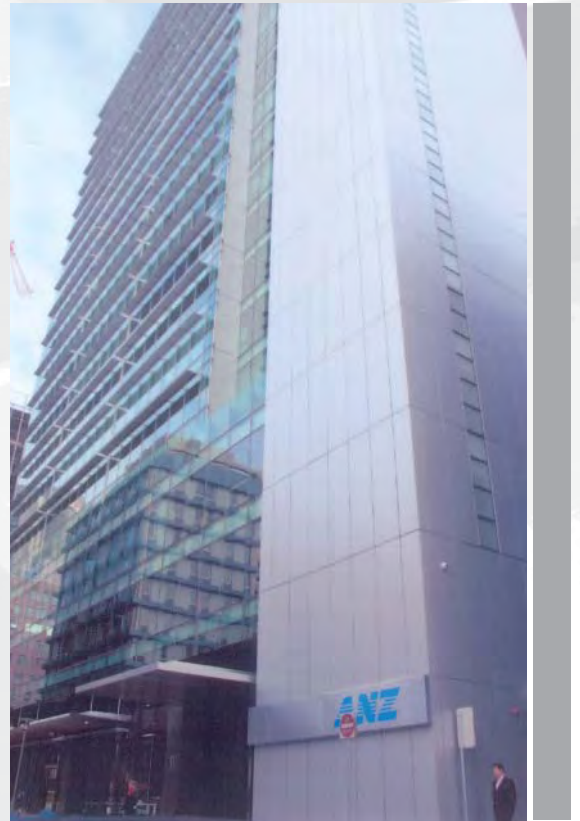


"Your enthusiasm, commitment and professionalism in all aspects of fabrication and erection of structural steel was a major contribution to the success of the Project."

P J Salveson Construction Manager
Adelaide Entertainment Centre Project
Fletcher Construction



← **LEFT & BELOW**
Various details of National Wine Centre, Adelaide, South Australia.



↖ **ABOVE LEFT**
Pelican Point Power Station, South Australia.
↑ **ABOVE**
Green Star Rated ANZ State Building, South Australia.
← **LEFT**
State Athletics Stadium, South Australia.



← **LEFT**
University of SA, City West Campus. Steel and Metal work supply and Precast Concrete erection (over 1,500 panels).

QUALITY DEMANDED

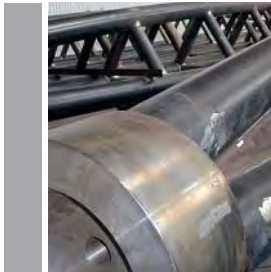
Inspections beyond the call

At Samaras Structural Engineers we are acutely aware of our responsibility to protect our clients' investment.

Consequently we place a huge emphasis on ensuring quality. We aim to deliver nothing less than a totally conforming product.

As part of our quality processes we regularly engage independent NATA-approved (National Association of Testing Authorities) Inspectors to complement our in-house testing.

Detailed inspection reports are supplied to clients throughout the project for their total peace of mind.



➤ ABOVE & RIGHT
→ Components for the Melbourne Sports and Aquatic Centre.



SAFETY PRIORITISED

Rigorous approach to OH&S

Safety is an absolute priority at Samaras Structural Engineers. As illustrated by the following measures, compromise is simply not an option:

- Comprehensive OH&S Plan continually reviewed and enhanced
- Rigorous staff induction process with extensive training in safety procedures

- Robust risk-assessment processes
- Work-Method Statements - tailored to minimise risk - provided to clients at the outset of every job
- All safety processes regularly audited by independent consultant

We also hold the Workcover Endorsed SABS L3 Certificate.

SKILL & DEDICATION

A talented workforce driven to succeed

We have no hesitation in saying that Samaras Structural Engineers has some of the best people in the Australian steel fabrication industry.

Our team of over 220 possesses a wealth of collective experience and expertise, and we believe the quality, scale and complexity of our work illustrates the incalculable value of this.

Samaras Structural Engineers strives to be seen as an employer of choice. With this goal in mind, we have instituted the following policies:

- We promote secure, permanent employment - we do not rely on labour hire
- Extensive ongoing professional development training provided and facilitated for all staff
- Enthusiastic promotion of apprenticeships

We believe these policies not only ensure our people fully understand, support and embody our culture of quality and professional excellence, but have contributed to our outstanding safety and stoppage-free IR record.

"Samaras have at all times demonstrated a highly professional attitude and have excelled in both time and quality. Problems both of a design and site nature have been handled with care and diligence to the satisfaction of all. We commend Samaras Structural Engineers."

David C Byrom Project Manager
Beverly Basketball Stadium Project (SA)
Hansen Yuncken



↑ **TOP**
Mechanical Installation,
AMCOR Glass Batch House.

↑ **ABOVE**
Precision Processes -
Thermal shrink-fitting,
Port River Rail Bridge.

SOLID CONNECTIONS

Networks, Memberships and Affiliations

While Samaras Structural Engineers is not reliant on sub-contractors in any area, we do have a long-established network of specialist suppliers to call on if and when required.

Our approach is very much one of partnership. So although Samaras Structural Engineers retains full project-management responsibility, all suppliers are required to meet our exacting quality and safety standards.

We have strong relationships with steel material suppliers, leading engineers, transport providers, paint system manufacturers and specialist machinists.

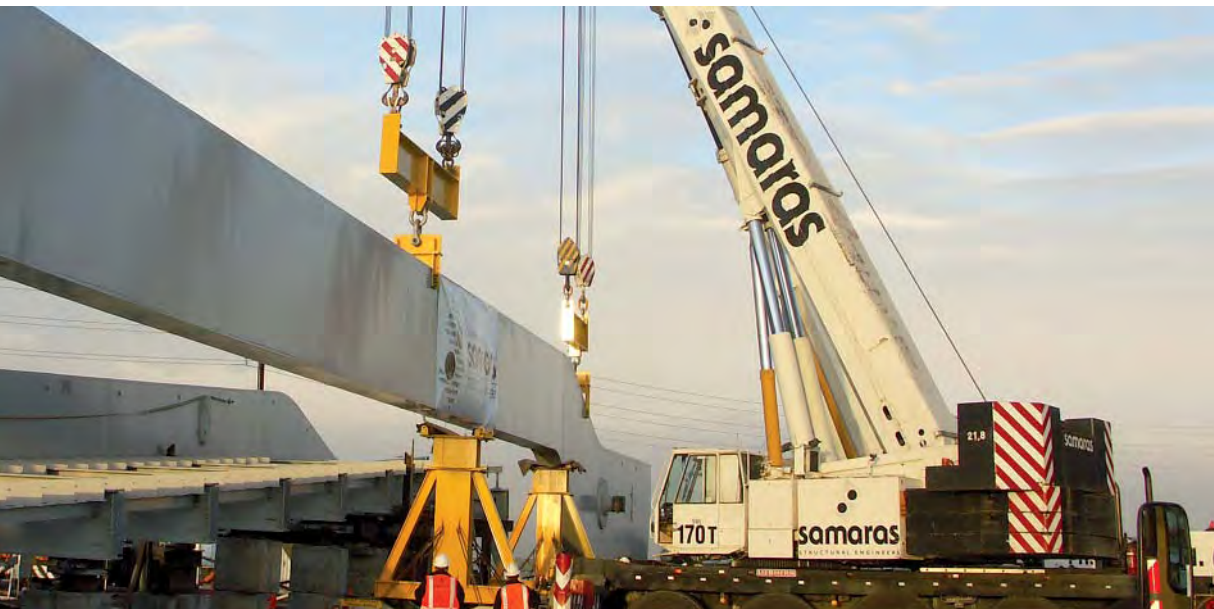
Our professional memberships and affiliations include:

- Master Builders Association
- Engineers and Employers Association
- Institute of Steel Construction
- Crane Association of South Australia



"I congratulate Samaras on the part it played in the successful completion of the new Northern Grandstand at Football Park, Westlakes. Your cooperative spirit in combination with the very high standards of workmanship displayed by your fabrication and erection personnel have produced some of the best quality large-scale fabricated steelwork seen by this office."

Michael P Dare Managing Director
Dare Sutton Clarke Engineers



- ↑ **TOP**
Lifting of silos weighing between 65 tonne and 155 tonne with a 650-tonne crane.
- ← **LEFT**
Loading Port River Rail Bridge girder for transport.
- ← **FAR LEFT**
Wishbone connection, Football Park (AAMI Stadium), South Australia.

OPEN COMMUNICATION

All enquiries welcome

To discuss an upcoming project with Samaras Structural Engineers, or to request specific information, please contact us through any of the channels below.

Contact Details

Samaras Structural Engineers
96-106 Grand Trunkway
Gillman SA 5013

Telephone: +61 8 8447 7088
Fax: +61 8 8447 7388

E-mail: mail@samarasgroup.com
Web: www.samarasgroup.com

SAMARAS STRUCTURAL ENGINEERS

96-106 Grand Trunkway
Gillman, South Australia 5013

Telephone: +61 8 8447 7088
Fax: +61 8 8447 7388

E-mail: mail@samarasgroup.com
Web: www.samarasgroup.com

